

# Bracket for 8625 & 8630, measurement ranges 20 N·m & 50 N·m

## MODEL 8600-Z006



### Highlights

- Easy to mount on the passive side of the 8625 or 8630
- Flexible assembly options
- Screws for mounting on the sensor included in delivery



Model 8625



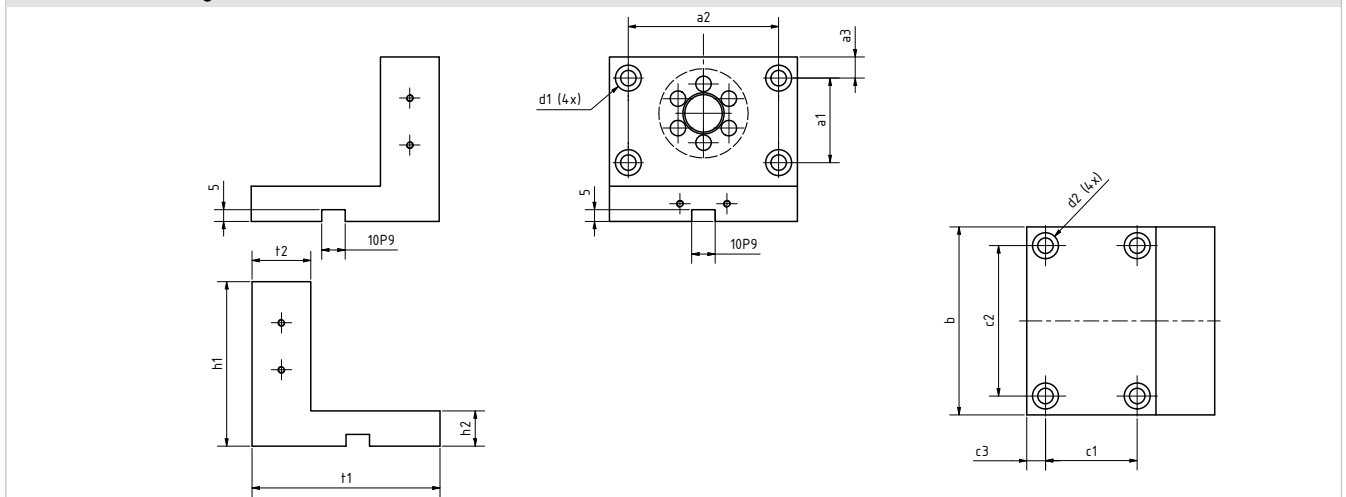
Model 8630

### Product description

For applications with horizontal torque introduction, this bracket is a quick and easy way to mount the sensor. Further fastening of the passive sensor side is not necessary, so an additional coupling can be dispensed with Model 8625.

Several through-holes are available for attaching the bracket. The tightening torque must be observed when mounting the bracket.

### Dimensional drawing – 8600-Z006



8600-Z006		a1	a2	a3	b	c1	c2	c3	d1 = d2	h1	h2	t1	t2
Dimensions	[mm]	36	64	9	80	39	64	8	Ø 6.6 DURCH, Ø 11 x 6.6	70	15	80	25

### Tightening torques according to ISO 4762:

8600-Z006		Mounting bracket on the sensor		Mounting bracket outside	
Screw size		M6 x 20		M6	
Min. strength class		12.9		8.8	
Tightening torque	[N*m]	17		10	



**MTS Messtechnik Schaffhausen GmbH**

Mühlenstrasse 4, CH-8260 Stein am Rhein, Telefon +41 52-672 50 00, Telefax +41 52-672 50 01, www.mts.ch, e-mail: info@mts.ch

Messen Prüfen Automatisieren [www.mts.ch](http://www.mts.ch)