

THE MEASUREMENT SOLUTION.


burster



Taking the lead
in instrumentation amps.

burster instrumentation amps 9250/9251.

OUTSTANDING SYSTEM WITH UP TO 8 MODULES + BUS CONTROLLER.

EXPERIENCE THE STUNNING PERFORMANCE OF THE NEW GENERATION OF AMPLIFIERS.

NEW

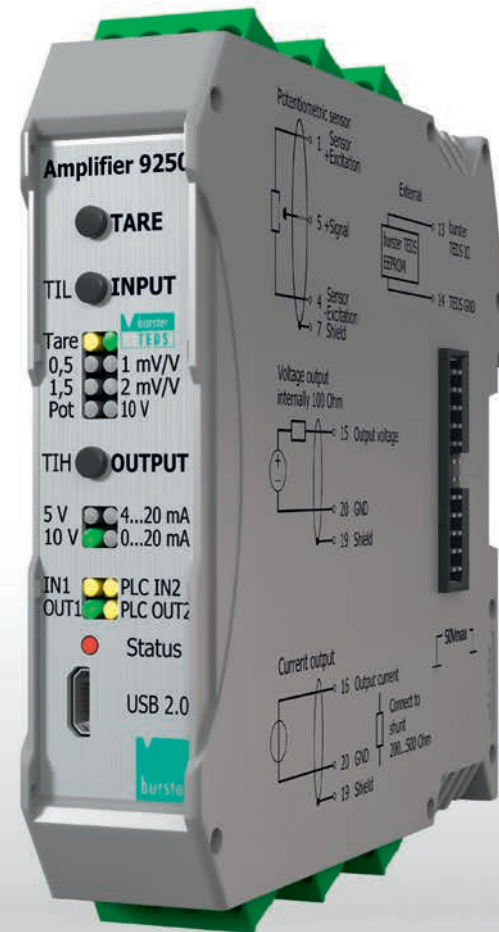
THE FUTURE DEMANDS PERFORMANCE

The future world of automation presents challenges such as networking, speed, accuracy, integration and cost effectiveness. **The latest generation of instrumentation amplifiers** is rising to this challenge with a universal design that delivers the best-ever performance on the market.

Don't take any chances - choose the new, strong link in your measurement chain.

The new 9250/9251 amplifier generation unites all the features that make modern measurement data acquisition actually possible for the first time. Network-compatible, high-precision, user-friendly, smart and versatile: the combined system of amplifier module and bus controller can be integrated into any existing setup. The amplifier 9250 takes signals exactly to the point where they can be combined, monitored and linked efficiently to other data.

Taking measurements to a new level.



AMPLIFIER MODULE 9250



BUS CONTROLLER 9251

9250/9251 UNIQUE PERFORMANCE SCOPE

Amplifier module 9250

- Ready to use with any make of sensor for your measurement needs, manufacturer independent
- Ultra-fast pushbutton configuration
- Automatic sensor recognition due to burster TEDS
- Suitable for force, pressure, displacement, rotational speed and torque measurements, including combined measurements
- Tare facility via pushbutton or I/O signals for each 9250 amplifier
- Up to two real-time signals/limit switches per amplifier module
- Versatile configuration using DigiVision PC software via USB port
- High measurement accuracy
- Space-saving design for control-cabinet mounting
- Adjustable cut-off frequencies

In system with bus controller 9251

- Expandable fieldbus interface via the bus controller
- Supports Ethernet based fieldbuses as PROFINET, EtherCAT, EtherNet/IP or I/O interface
- Synchronous export of up to 8 measurement channels via the bus controller
- Full measurement-data export facility

For further information visit:
www.instrumentation-amps.info



YOUR KEY TO FUTURE PRODUCTION OPTIMIZATION.



Expandable to
8 measurement channels

Multitalents.

Work with a range of sensors.

Quick-starters.

Ultra-fast pushbutton configuration and easy import of sensor data via burster TEDS.

Pace-setters.

Rapid measurement and response time.

Precision pros.

Highly accurate measurement results.

All-rounders.

Support all relevant fieldbus interfaces.

Band-leader.

Synchronous export of up to 8 measurement channels via the bus controller.

Prove the saying that „the whole is greater than the sum of its parts“ by opting for the amplifier generation 9250/9251 - technology expertly combined to meet the challenges of Industry 4.0, both today and tomorrow. Then enjoy a bus-compatible, modular system that is not only easy to use but achieves high precision at a price that grows in competitiveness with your increasing requirements.

GOOD REASONS FOR THE NEW GENERATION OF INSTRUMENTATION AMPS

- The fieldbus interfaces give you flexibility, speed and perfect connections, and save you time, money and other resources when integrating your measurement setup with existing systems.
- Automatic sensor recognition due to burster TEDS lets you play absolutely safe, protecting you from setting incorrect parameters.
- When you use our 9250/9251 system you are benefiting from decades of experience in in-process instrumentation.
- The new 9250/9251 generation of instrumentation amplifiers boosts your confidence in the production process while making optimum use of process capacity and increasing output quality.
- In thousands of global applications burster amplifiers are working with an unbelievable reliability and longterm stability. Benefit from the expertise that we've gained in countless customer applications forming the base for the new generation of instrumentation amps.

Precise
Economic
Scalable
User-friendly
Modular
Flexible
Bus-compatible
Inclusive
Unique
Future-proof
Time-saving
Versatile



For further information visit:
www.instrumentation-amps.info

Endless prospects for all industries.

THERE IS AN ENDLESS SCOPE OF APPLICATIONS IN WHICH THE NEW INSTRUMENTATION AMPLIFIER GENERATION 9250/9251 WILL SUPPORT YOU. EXPAND YOUR OPTIONS BY THE NEW DIMENSION OF FIELDBUS CONNECTION.

The new 9250/9251 generation of instrumentation amps. All-round talents in every sector.

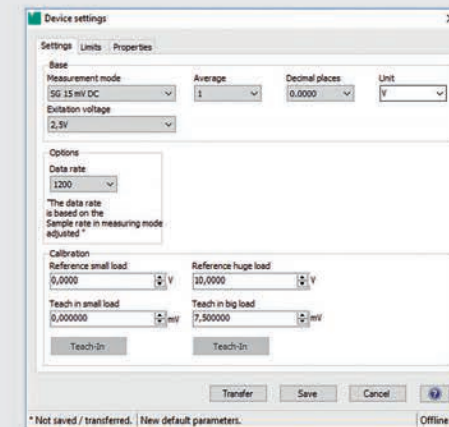


Comfort in configuration. EVEN MORE CONVENIENCE, SPEED AND SIMPLICITY.

DigiVision PC software

The new **9250/9251** generation of instrumentation amps stands out for being easy and adaptable to use, whether individually or as a combination of amplifier module and bus controller. It takes a matter of seconds to put your new amplifier into use, including quick and easy connection of sensors and custom configuration at the 9250 module itself. If you need to analyze more than one measurement channel, simply use the 9251 bus controller to expand and manage the system. Of course this can all be done without **DigiVision**, but the software just makes it easier.

- Convenient device configuration via front-panel USB port
- Automatic recognition of amplifier modules in DigiVision
- Manage a range of parameter sets
- Backup facility for storing settings
- Choice of output parameter (current or voltage)
- Manual configuration of calibration data in the module
- Bus controller configuration via USB



Service & more. USE OUR CUSTOMIZED CAREFREE SERVICE PACKAGE!

The new 9250/9251 generation of instrumentation amplifiers from burster delivers the maximum in quality and efficiency for your complex, high performance production processes. Take advantage and increase your company's security in dynamic markets. With the comprehensive range of services included in the **burster carefree package**, you can count on precise, rapid measurement-data acquisition at all times. **Lean back and enjoy the benefits of our service:**

- Solid application service upfront
- Optimization support for ongoing processes
- Compensation of complete measurement chain consisting of a sensor and amplifier
- German-accredited DAkkS- or factory calibration at burster and choice of in-house or on-site recalibration
- Individual user training
- Professional commissioning support

www.burster.com

**BECAUSE PROGRESS
NEEDS VISION.**

burster, the specialist for measuring equipment and sensors, delivers the ideal solution that meets your requirements to a T. We offer you forward-looking products, system solutions and a comprehensive suite of services to supplement our product range. With personal commitment and an uncompromising focus on quality.

burster praezisionsmesstechnik
gmbh & co kg
Talstr. 1-5
76593 Gernsbach
Germany

Phone: +49-7224-645-0
Fax: +49-07224-645-88
Email: info@burster.com
www.burster.com



THE MEASUREMENT SOLUTION.



Measuring technology
with perspective.