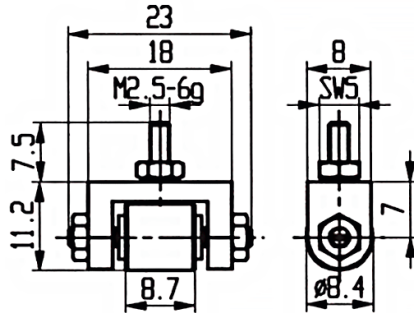
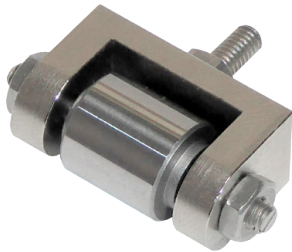


## Accessories

### Probe tip for displacement sensors

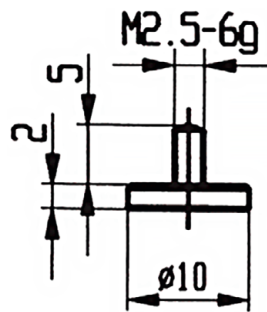
Model 8712, 8713, 8738, 8739 and 8741

Model 8741-Z008



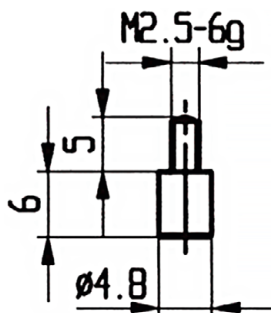
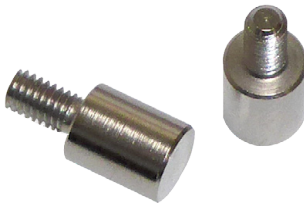
- Tip with roller
- Adjusting nut (Only for displacement sensors with turning protection)

Model 8741-Z004



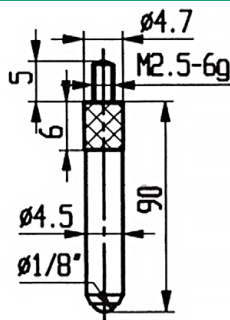
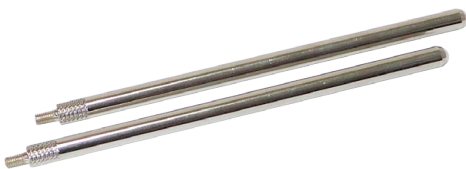
- Measuring insert
- Flat, Ø 10 mm

Model 8741-Z003



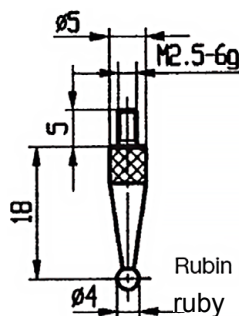
- Measuring insert
- Flat, Ø 4.8 mm

Model 8741-Z009



- Measuring ball insert
- L = 90 mm

Model 8741-Z005



- Measuring insert with ruby ball
- Ø 4 mm